



KALC 2022

Korean Association for Lung Cancer International Conference
November 10-11, 2022 | Lotte Hotel World, Seoul, Korea

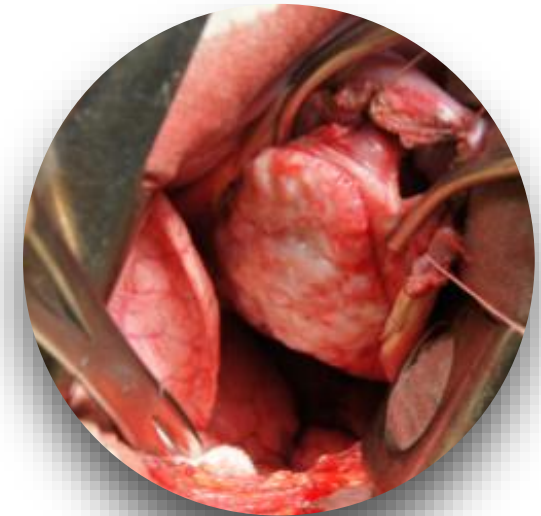
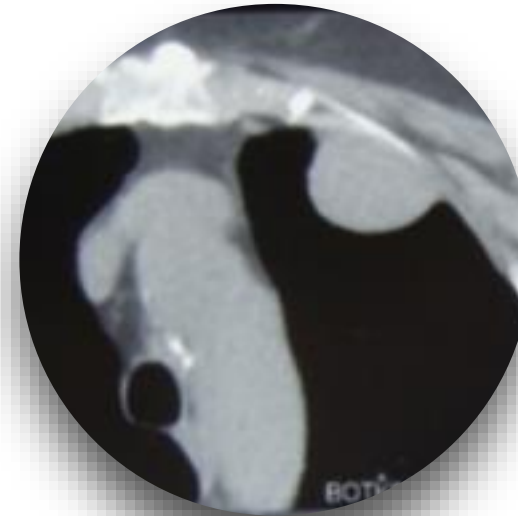
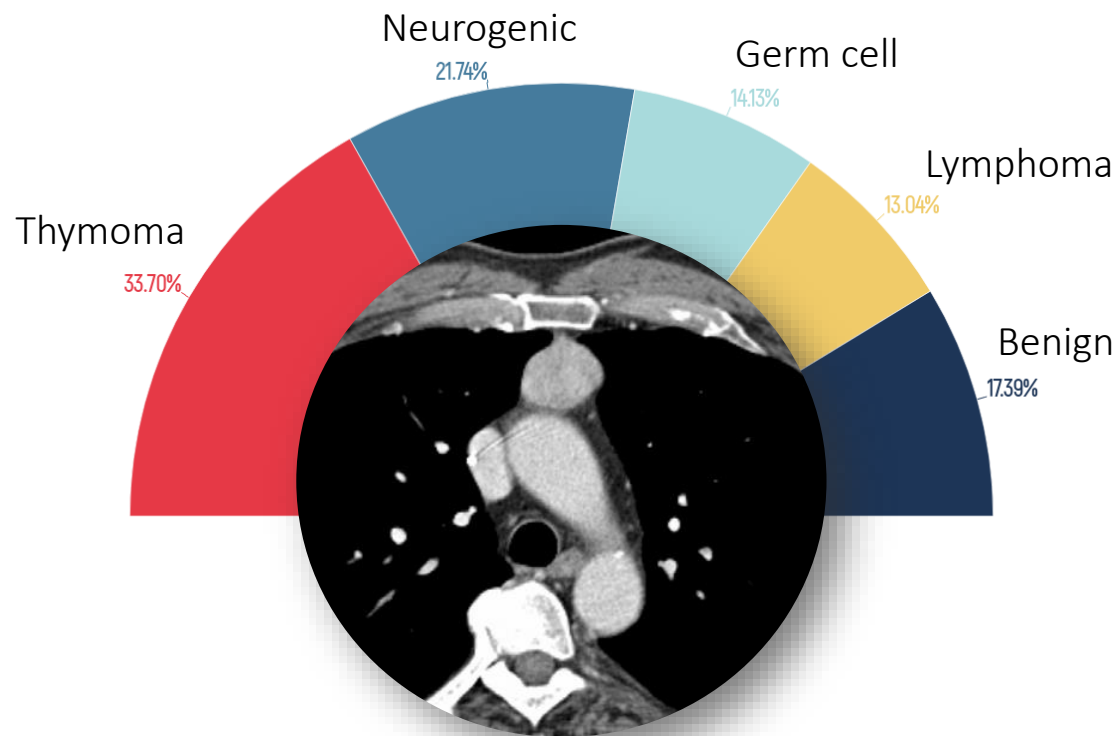
The Curative Role Of Surgery In Treating Patients With Thymic Tumours And Pleural Seeding

Andrey Ryabov, Oleg Pikin, Vladimir Glushko, Konstantin Kolbanov, Oleg Alexandrov, Vitaliy Barmin, Dina Martynova, Vladimir Bagrov

P. Hertsen Moscow Oncology Research Institute



Introduction



- ✓ Thymoma is the most common
- ✓ Seldom in childhood, peak incidence after 60 y.o.
- ✓ Associated with paraneoplastic syndromes

- ✓ In the presence of pleural seeds main goal is to achieve a total cytoreduction

Material and methods

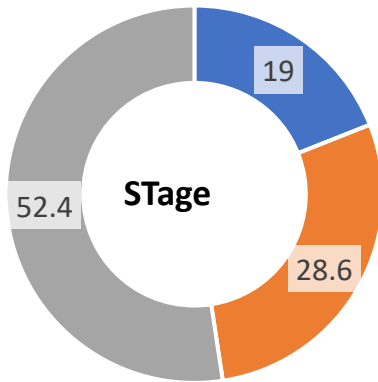
21
patients

63%
Synchronous
metastasis

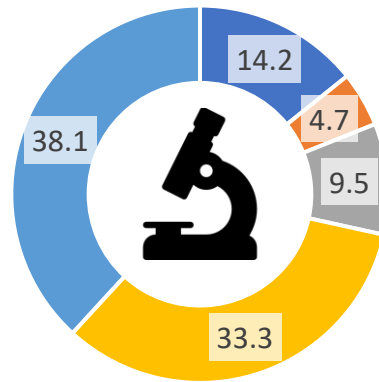
37%
Metastasis as a result
of progressive disease



25 мес.
Mean time to
metastasis development

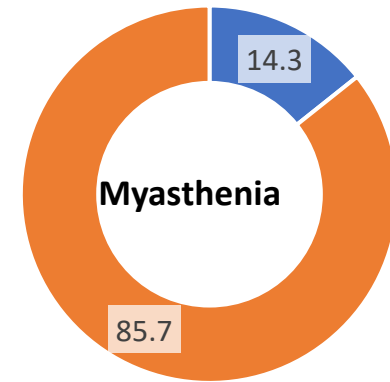


■ II ■ III ■ IVA



■ AB ■ B1 ■ B2 ■ B3 ■ C

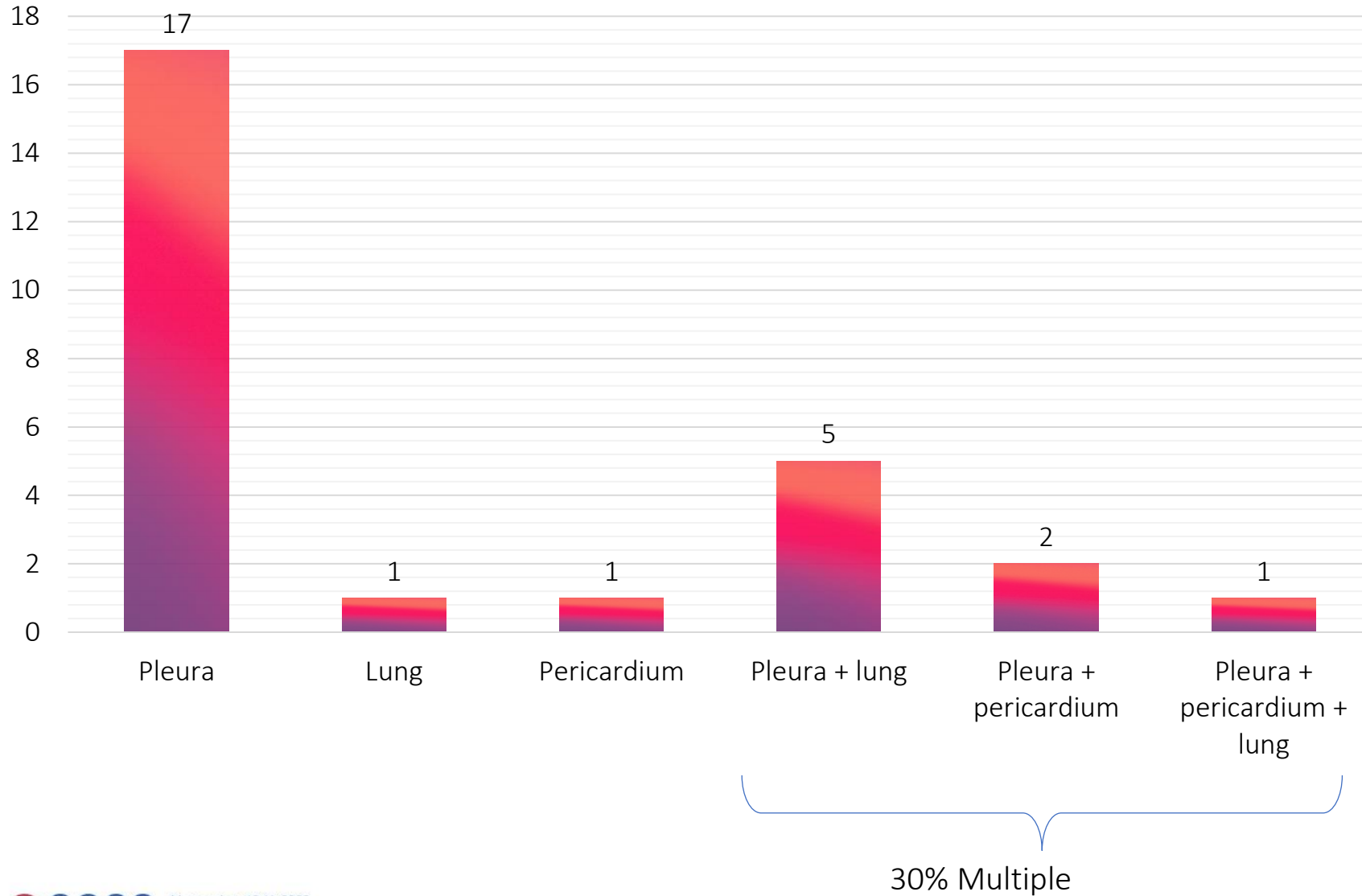
B3 + C = 71%



■ Да ■ Нет

All patients were operated

Material and methods

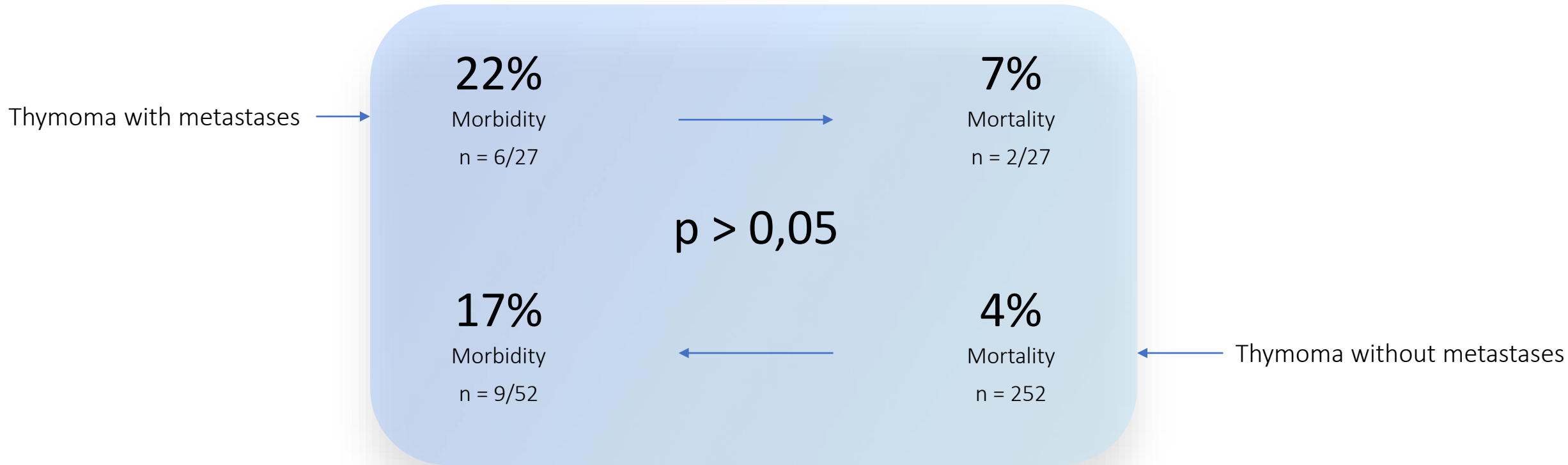


6.6 cm
Mean tumour size

3 (11%)
Myasthenia

18 (66%)
Invasion

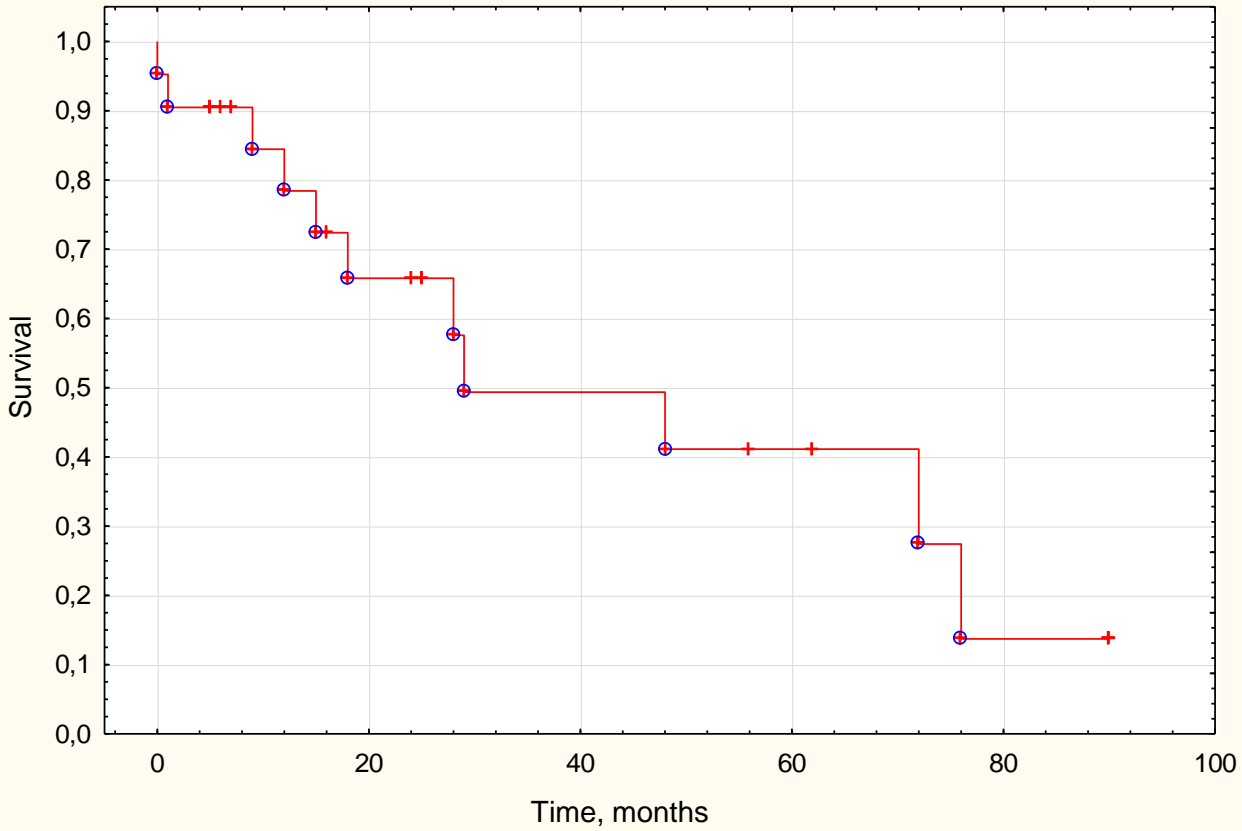
Results



Results

Overall survival

○ Dead + Alive



78%

1-year

49%

3-year

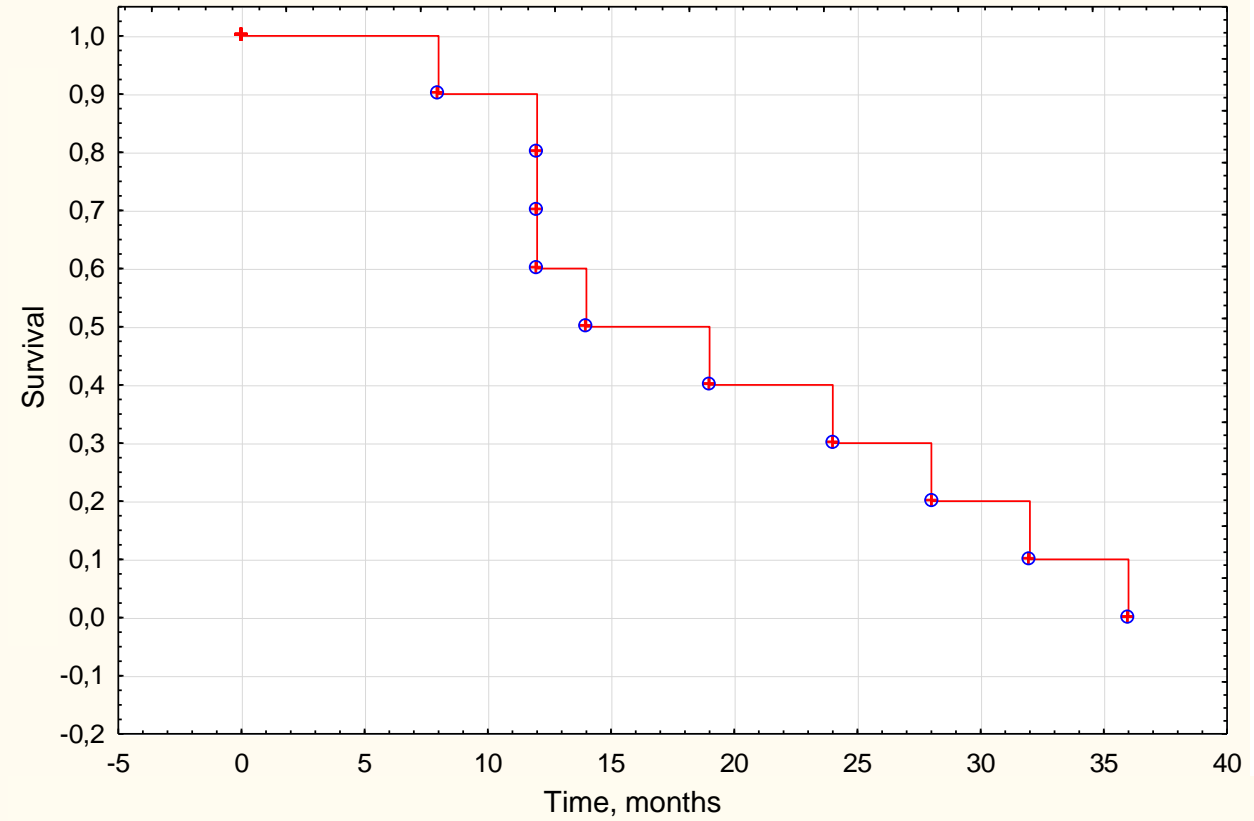
41%

5-year

Me = 29 mo.

Recurrence-free survival

○ Recurrence

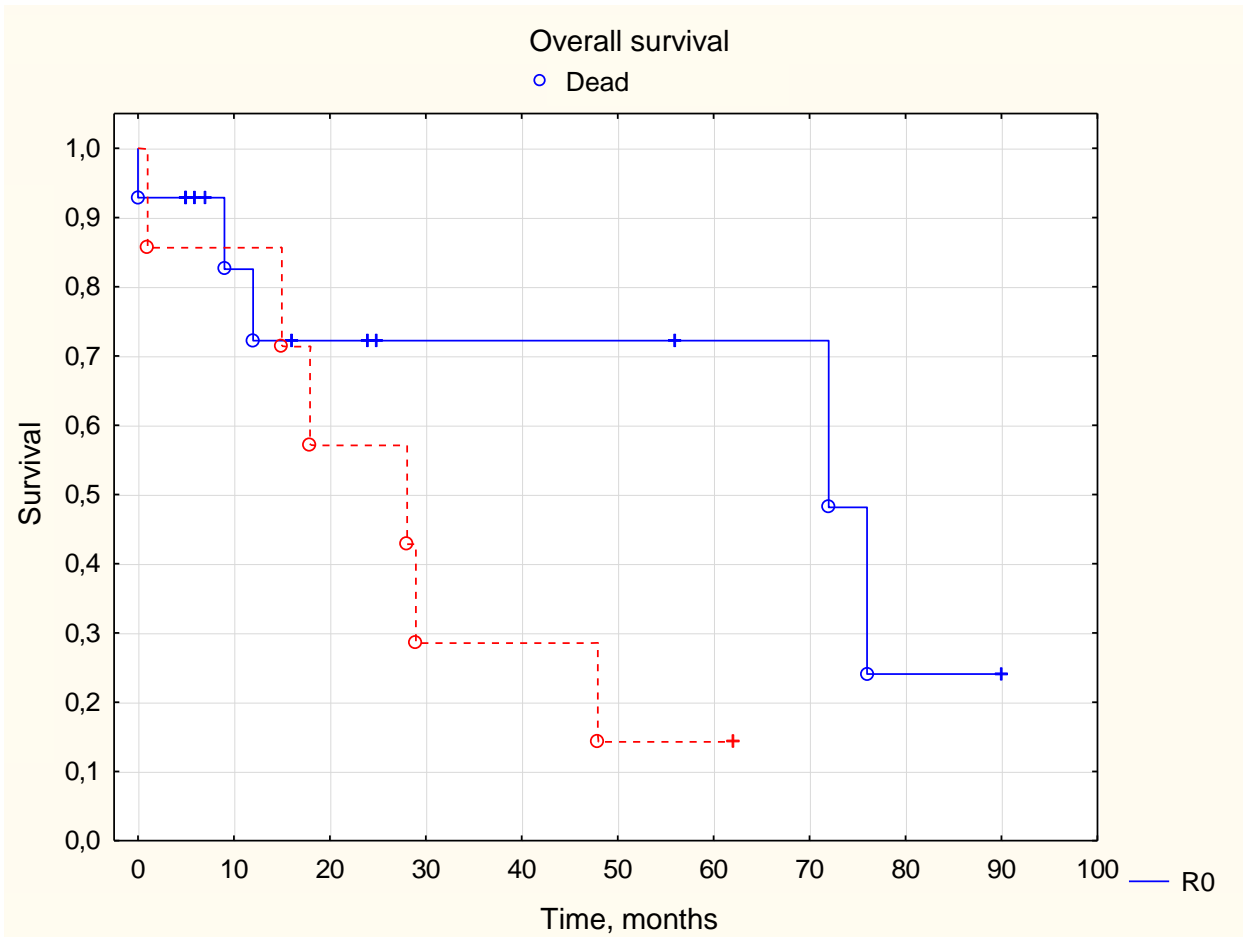


60%

1-year

* in 47% of patients

Me = 14 mo.



Me in R0 = 28,9 mo. (95% CI 15,3-128,6)

Me in R1-2 = 13 mo. (95% CI 2,3-53,6)

} p = 0,115

Mean tumour size in **R0** = 5,4 cm (3,5-7,2 cm)

Mean tumour size in **R1-R2** = 9 cm (4,6-13,3 cm)

} p = 034

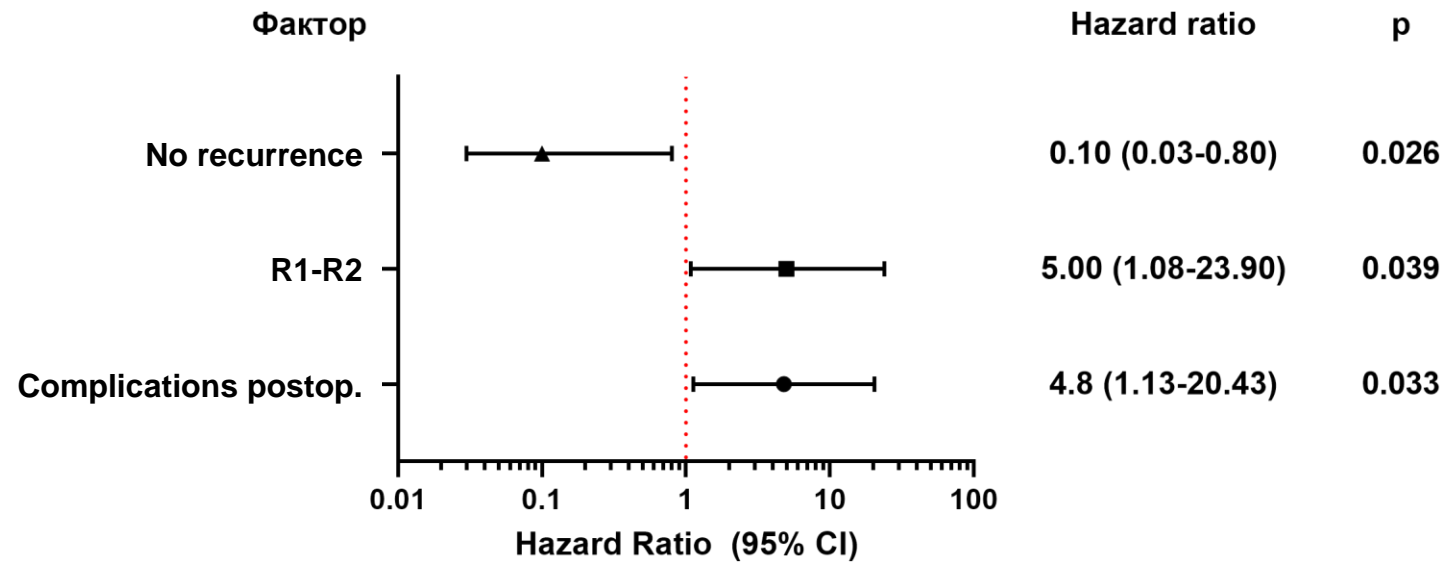
Radicality **was not** influenced by:

Tumour histology (p = 0,127)

Number of metastases (p = 0,274)

Location of metastases (p = 0,428)

Results



Probability of mortality is higher:

- **4,8** times in case of postop. complication
- **5** times in R—R2 operation

Probability of mortality is lower:

- **5,8** times in case of non-recurrence